

CASE STUDY



LEDVANCE

LIGHTING DESIGN FOR THE HIGHEST STANDARDS

National Opera House, Wexford, Ireland

KEY FACTS

OPTIMALLY ADJUSTED LIGHT

With minimal glare and uniform light, the LED lights make a noticeable difference in lighting quality.

A WORTHWHILE INVESTMENT

LED lights, such as spotlights, save up to 90 percent energy compared to halogen spotlight lamps and enable a quick return on investment.

HARMONIOUS DESIGN

Creatively usable LED strips and spotlights in the innovative SCALE design integrate seamlessly into the ambitious architecture of the opera house.

EASY MAINTENANCE

With a 5-year warranty and a lifespan of up to 50,000 hours, the LED lights reduce maintenance costs and effort.

TRACK SPOT
D75 25W/3000K



SPOT DARKLIGHT
FIX P 8W 927 PS



SURFACE COMPACT
300 24W/3000K



ALWAYS PERFECTLY ACCENTUATED – LED LIGHTS FROM LEDVANCE

LEDVANCE modernizes the lighting at the National Opera House in Wexford with a precisely curated selection of innovative LED lights and LED strips, setting new standards for lighting quality, efficiency, and maintenance convenience.

THE CHALLENGE

The National Opera House in Wexford is Ireland's first multipurpose opera house and the venue for an internationally renowned opera festival. Opened in 2008, the opera house is also a landmark of the city. The lighting of the building needed to be comprehensively modernized. More efficient alternatives were sought for the recessed lights on the walls and ceilings, as well as for the lighting in the foyer, bar areas, and staff corridors, including the use of LED strips.

THE SOLUTION

Kellihers Electrical Waterford together with a local installer, who were responsible for implementing the modernization, chose the offer from the LEDVANCE team. Within the specified budget, the team presented a comprehensive modernization package that met all requirements in terms of energy efficiency, lighting quality, and maintenance convenience. This

included 54 tracklight spots for the bar and foyer area, 74 spotlights for illuminating the tiers and corridors in the theater, LED strips for indirect ceiling lighting, and 20 surface-mounted wall lights for the staff and service corridors.

THE BENEFITS

With a deep reflector and black anti-glare ring, the tracklights provide minimal glare (UGR <16) and flicker-free light. The spotlights, with their compact size and attractive SCALE design, blend perfectly into the high-quality ambiance of the opera house and offer up to 90 percent energy savings compared to halogen spotlights. The surface lights also impress with their slim profile, durable construction, and bright, uniform light. Additionally, the lights used reduce long-term costs and maintenance effort thanks to a 5-year warranty and a nominal lifetime of up to 50,000 hours (L70/B50 at 25°C).

"Working with the LEDVANCE team was professional and solution-oriented from the start. The new lighting plays a crucial role in making the visit to the National Opera House a special experience."

Nicky Pender, Facilities Manager at Wexford Opera

SUMMARY

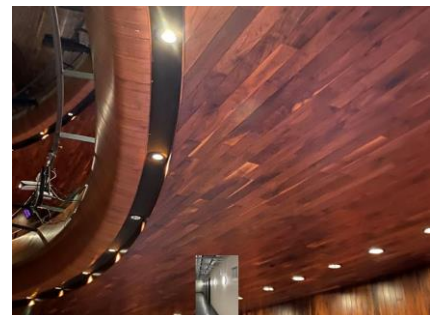
The lighting of the National Opera House in Wexford, Ireland, is to be comprehensively modernized. For this purpose, LEDVANCE is renewing the existing lights in the foyer, bar, auditorium, service corridors, and stairwells with LED strips and a precisely selected range of tracklight, spotlight, and surface-mounted lights. These seamlessly integrate into the architectural design of the opera house, significantly improve the lighting quality, reduce energy costs, and decrease maintenance efforts.



Bar Area and Back-of-House Corridor



Corridor



Auditorium