



LEDVANCE



OSRAM



POWER THROUGH LIGHT

NEW SOLUTIONS
NEW BENEFITS
NEW ERA

MARCH 2025

DISCLAIMER

Subject to change without notice. Notwithstanding every effort made to ensure the accuracy of technical information in this catalogue, errors and omissions excepted. LEDVANCE disclaims any and all liability for products used in the installation as this validation with regards to suitability for purpose is entirely the responsibility of the installer. The pictures displayed in the catalogue are solely for illustration purposes only and may differ from actual products available. Products need to be installed by an appropriately qualified electrician. Specifications are subject to change without prior notice due to continuous advancements in technology. Due to manufacturing tolerances, some specifications may vary slightly. Accordingly, technical data shown is typical and given provided for guidance purposes only. All our products are to the best of our knowledge, free from defects at time of shipment unless proven to the contrary. Sole and exclusive remedy is limited, at our sole discretion, to repair or replace products supplied by us within warranty constraints. Liability is disclaimed for any incidental or consequential damage and/or loss, of whatsoever nature and howsoever arising in any way out of the use or reliance on information contained within this catalogue. No liability will be assumed for misapplication, which includes but are not limited to misuse, incorrect installation or application, usage outside of design parameters or in unsuited environments. Subject to applicable law. While stocks last.

Not all products are kept in stock locally. Please contact our LEDVANCE South Africa Client Service Team for information on stock availability, minimum order value and processing times.

Contact Details:

Phone +27 11 207 -5600/5700
mailto: ledvance.za@ledvance.com

POWER THROUGH LIGHT

WHO WE ARE AND WHAT THIS MEANS FOR OUR STAKEHOLDERS

LEDVANCE was introduced to the world in 2016 as a spin off from the lighting pioneers OSRAM. As a new brand with over 100 years of experience, we are proud of our manufacturing excellence, innovative spirit and passion for lighting. Since then, we have developed an extensive luminaires portfolio, received several awards for our human centric lighting (HCL) solutions and emerged as one of the top players in the global lighting market.

Today, as the world faces groundbreaking challenges and transformations from a cost of living and energy crisis to climate breakdown and environmental destruction the story of LEDVANCE also must adapt and evolve. We want to stay true to our roots as industry innovators and push forward, find imaginative solutions to our customers' challenges and develop into a broader company that goes beyond just lighting.

True to our new mantra "Power Through Light", we want to empower our customers to harness the power of light like never before both as a tool for illumination as well as for power generation. Our intelligent energy solutions, solar technology, and advanced lighting systems for improved working and living environments mean that our customers benefit from this transformation with real savings in energy costs. At the same time, we are committed to contributing to a greener planet by reducing CO2 emissions and waste through sustainable products, solutions and processes.

Times are truly challenging, but we have a chance to both improve people's quality of life with smart and simply powerful products and to conserve the planet's resources by finding the right solutions together with our customers. We have the courage and experience to accelerate converting all these opportunities into reality. Because what matters most is leaving a world where future generations can thrive. Together, we make change happen.

WHY CHOOSE LEDVANCE AS YOUR PROJECT PARTNER?

Find the right solutions for your projects

Are you looking for a full-service provider for your lighting project? As your professional lighting partner we can offer you a comprehensive range of application-specific products. We can help you reduce the costs of your lighting systems and at the same time improve the quality of light. The basis is our worldwide network in which we bring together the know-how and experience in countless industries and for a wide range of major customers. Our experts will support you in your lighting projects with advice matched to your needs, a tailored selection of products and excellent service. From a single source.

YOUR BENEFITS: PRODUCTS & SERVICES FROM A SINGLE SOURCE

Projects have to end up in visible results. Rely on a partner providing a holistic product portfolio, a global network of professional partners and proven project knowledge since decades.

- Cost Reduction
- Energy Efficiency
- Excellent Light Quality
- Project Support
- High-Precision Volume Planning

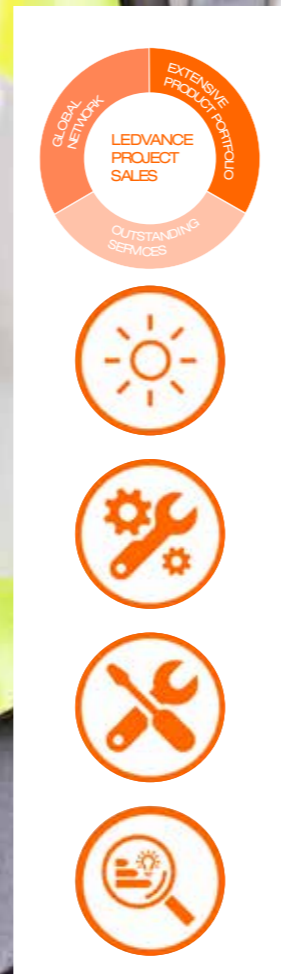
OUR FULL SERVICE PACKAGE FOR YOUR PROJECTS

We provide lighting calculations with professional lighting design software Dialux Evo and Relux. The calculations comply with current norms and standards (EN 12464, DIN 67600). We have an extensive expertise in the planning of different lighting applications. We offer a detailed presentation of your lighting project including visualizations of the light effects.

According to the special needs of your project, we advise you on appropriate luminaires, lamps, LED Modules and Electric Components and Light Management Systems solutions.

Our technical support will assist you at every stage of your project via telephone. We come to your installation site and offer you an on-site support with the project supervisor. We carry out user-oriented test setups with our products in our application lab. We provide you with all data sheets and in a comprehensive documentation. You receive a detailed overview of the products needed for your project in a precise volume planning.

We offer the measuring of energy efficiency and cost savings for modern lighting concepts and the evaluation of feasibility of the requested functionalities.



CONTENT

OFFICE LIGHTING	Page 5
INDUSTRIAL LIGHTING	Page 7
SHOP LIGHTING	Page 9
HOSPITALITY LIGHTING	Page 11
OUTDOOR LIGHTING	Page 13
SPORTS LIGHTING	Page 15
LOCAL PORTFOLIO	Page 17
LEDVANCE RENEWABLES	Page 25

OFFICE LIGHTING

LED Luminaires: OFFICE LIGHTING SOLUTIONS

WOULD YOU LIKE TO KNOW MORE ABOUT OFFICE LIGHTING SOLUTIONS ?
Contact us:
ledvance.za@ledvance.com
+27 11 207 5600



Creating the right working light instantly offers benefits for companies in every sector and of every size. Lighting solutions that are well designed ergonomically enhance your employees' concentration. Modern lighting concepts additionally ensure greater energy efficiency and reduce costs. More than one good reason to give sustainable lighting concepts the green light.



BIOLUX HUMAN CENTRIC LIGHTING (HCL) BIOLUX HCL ZIGBEE

Light management system

- Easy and quick installation
- Automated commissioning and setup by LEDVANCE BIOLUX app
- Intuitive control of BIOLUX HCL luminaires - BIOLUX HCL LED strips via control unit
- Easy selection of the appropriate lighting modes for different working situations
- 5 years BIOLUX HCL system guarantee when operated as part of a BIOLUX HCL system

WOULD YOU LIKE TO KNOW MORE ABOUT BIOLUX HCL ZIGBEE AND MORE PRODUCTS AVAILABLE?
Contact us:
ledvance.za@ledvance.com
+27 11 207 5600



1 SUPERIOR PANEL FLEX 600 30W 840 PS

- Highly versatile due to selectable power steps (Power Select - PS) on the driver and up to 4860 lm
- Energy savings thanks to high system efficacy: up to 169 lm/W
- High color consistency with SDCM 3
- External driver for extended flexibility and easy installation
- Low flicker light thanks to special electronic control gear
- Tool-free electrical connection due to push button connector
- Through-wiring possible with included connector box
- Decentral emergency lighting possible with separately available LEDVANCE Emergency Conversion Box
- Extended services such as energy monitoring and remote maintenance possible with DALI versions
- 7 years guarantee



3 VALUE DOWNLIGHT ALU

- High luminous efficacy
- Energy savings up to 60 % (compared to luminaires that use CFL lamps)
- Very homogenous light
- Functional design
- Easy installation with fast connection
- External driver for extended flexibility (compatible with selected DALI drivers)
- 5 years guarantee
- Diameter of required ceiling cut-out: 150 mm or 200 mm (depending on version)
- Type of protection: IP44



2 PERFORMANCE LINEAR IndiviLED DIRECT/INDIRECT

- Easy upgradeability of light source and driver (EVERLOOP design)
- Homogenous light distribution and reduced glare (UGR ≤ 19) thanks to IndiviLED® optics
- Pendant luminaires with direct light emission (70%) and indirect light emission (30%)
- High performance with CRI90 and up to 133 lm/W
- Highly versatile due to selectable power steps (Power Select - PS) on the driver
- High color consistency with SDCM 3
- Easy installation
- Low flicker light thanks to special electronic control gear
- Multiple mounting options thanks to different accessories
- 5 years guarantee



4 VALUE SPOTLIGHT COMBO ADJUST

- Colour temperature adjustment via switch on the back of the spot
- Power select: Brightness adjustment via a switch on the driver
- Coverable with most of the isolation material
- Colour temperature switch (CCT): 2700 K, 3000 K, 4000 K
- Power select option available to select between 2 lumen packages
- Type of protection: IP65 (room side)
- Housing material: polycarbonate (PC)
- Dimmable with many common dimmers
- Replaceable ring accessories

INDUSTRIAL LIGHTING

WOULD YOU LIKE TO KNOW MORE ABOUT INDUSTRIAL LIGHTING SOLUTIONS ?
Contact us:
ledvance.za@ledvance.com
+27 11 207 5600



Light can fulfill a wide range of different functions and purposes in industry. The wealth of applications stretches from illuminating entire assembly halls to lighting smaller units to production preparation through to rooms for product tests and quality assurance. Light can enhance productivity while at the same time significantly reducing your energy costs.

PERFORMANCE TRI CCT HIGHBAY G4

- Highly versatile due to selectable power steps (Multi Lumen) on the housing
- Improved UGR compared to previous generations, down to $UGR \leq 19$ (<150W, 70°) in combination with reflector
- High luminous efficacy
- Energy savings of up to 70 % compared to conventional high bay luminaires
- Optimized weight and size due to compact design
- Different luminous flux and beam angle for mounting heights of ~ 6 m to 18 m in 4000 K or 6500 K
- 0-10 V dimmable
- Lifetime (L80/B10): up to 100,000 h (at 35 °C)



WOULD YOU LIKE TO KNOW MORE ABOUT OUR HIGHBAY SOLUTIONS
Contact us:
ledvance.za@ledvance.com
+27 11 207 5600



1 PERFORMANCE DAMPPROOF G4

- UV-stabilized polycarbonate opal diffuser ensures uniform light distribution and long-lasting durability
- Polycarbonate body and diffuser offers IK08 impact protection
- Sleek and lightweight slim body design, compact but powerful
- Long 50,000 hours lifetime reduces maintenance costs
- Optional sensor design with more energy saving
- Available in 7 wattages and lumen packages
- Available in 3 length options, ensuring direct replacement of traditional 2-4-5 foot fluorescent dampproof fixtures
- Input voltage: 220...240 V
- Operating frequency: 50/60 Hz
- High system lumen efficacy: up to 150 lm/W
- Color rendering index Ra: > 80
- High frequency sensor for daylight and motion detection
- Anti-corrosion stainless steel clips
- Type of protection: IP66
- Impact resistance: IK08
- Class I Luminaires
- CB, EMC, RED, RoHS certified



2 VALUE DAMP PROOF COMPACT THROUGH WIRING

- Excellently usable in bigger installations due to pre installed through-wiring (3x1.5mm²)
- Easy access to electrical terminal thanks to end caps with twist and lock mechanism
- Tool-free electrical connection due to push button connector
- Uniform light distribution
- 5 years guarantee
- Power select option available to select between 2 lumen packages
- Through-wiring 3x1.5mm² already installed
- Lifetime (L80/B10): up to 50,000 h (at 25 °C)
- High luminous efficacy: up to 123 lm/W
- Polycarbonate housing IP66 and IK08
- Beam angle: 120°



3 PERFORMANCE FLOODLIGHT G4

- Breather membrane to optimize air exchange, without compromising IP protection
- Highly versatile due to selectable power steps (Multi Lumen) on the housing
- Robust cable gland with integrated waterstop function
- Safe and very uniform illumination, due to frosted and tempered glass diffuser
- Bright, robust and durable
- Energy savings of up to 90 % compared to halogen lamp floodlights
- No upper light output ratio (ULOR 0%) when mounted at 0° tilt
- High luminous efficacy
- Type of protection: IP66
- Pre-installed, flexible 1 m cable (H05RN-F), wrapped 3 x 1.0 mm² single wires
- Reflector-based, symmetric light distribution with 100° x 100° beam angle
- Mounting bracket with 30° angle and wide rotation area
- Available in Black and White



SHOP LIGHTING

LED Luminaires: SHOP LIGHTING



WOULD YOU LIKE TO KNOW MORE ABOUT SHOP LIGHTING SOLUTIONS ?
 Contact us:
 ledvance.za@ledvance.com
 +27 11 207 5600



In our daily business operations, we have to assume our environmental responsibility and use resources as efficiently as possible. Optimizing energy consumption is a top priority in lighting solutions for the retail industry.

No matter who may be involved – food discount stores, boutiques, furniture stores, DIY stores or garden centers – there is virtually nowhere else where the energy used in lighting can be saved so easily. Converting to environmentally friendly LED alternatives will have a positive effect on energy consumption and CO2 emissions.

THE IMPROVED LEDVANCE LED STRIP SYSTEM AS FLEXIBLE AS YOUR DEMANDS

Quality and functionality are what counts – day in, day out. Our LED Strip System offers you exactly what you need to meet your various demands – uncomplicated and professional. A portfolio of matching electronic components covering an extremely wide variety of applications. All perfectly coordinated, flexible, reliable and easy to handle. A guarantee of up to five years and excellent customer service.



WOULD YOU LIKE TO KNOW MORE ABOUT OUR LED STRIP SYSTEM
 Contact us:
 ledvance.za@ledvance.com
 +27 11 207 5600



1 PERFORMANCE TRUSYS FLEX

- Very wide light distribution for area lighting
- Easy installation, no tools required for connection
- Energy saving and cost-effective
- Flexible application due to a range of different lumen packages and beam angles
- Rows of up to 57 (On-Off) / 66 (DALI) luminaires possible
- Versions with DALI ECG available Beam angle very wide: 120°
- Click into place solution with smart click buttons
- Luminous efficacy: up to 160 lm/W
- Fixed luminaire taps
- Lumen package 5600 lm, 8000 lm, 11200 lm
- Steel-sheet housing
- Lens material: PMMA
- Type of protection: IP20
- Common family design with LEDVANCE
- Lifetime (L80/B10): up to 60,000 h



3 PERFORMANCE TRACKLIGHT SPOT ZOOM 25W

- Dimmable 3-phase tracklight spot with mechanical zoom lens
- 3-Phase adapter compatible with common tracks
- No distraction of attention from the illuminated objects thanks to reduced design
- Low flicker light thanks to special electronic control gear
- 50,000 hours lifetime
- Available in Black and White



2 PERFORMANCE TRACKLIGHT SPOT COMPACT 28W

- Timeless design suitable for high-quality interior
- 3-Phase adapter compatible with common tracks
- No distraction of attention from the illuminated objects thanks to reduced design
- Low flicker light thanks to special electronic control gear
- 50,000 hours lifetime
- Colour options: Black, White and Silver



4 PERFORMANCE LED TUBE T8 EM FOOD

- Food looks fresh and appetizing without unduly “beautifying” it
- Quick, simple and safe replacement of fluorescent lamps without rewiring the CCG
- Energy savings of up to 74 % (compared to T8 fluorescent lamp)
- Shatter protection thanks to special PET coating
- Support the implementation of the HACCP concepts from production through to presentation
- IP 20 protection
- Also suitable for operation at low temperatures
- 60,000 hours lifetime

HOSPITALITY LIGHTING

LED Luminaires: HOSPITALITY LIGHTING



WOULD YOU LIKE TO KNOW MORE ABOUT HOSPITALITY LIGHTING SOLUTIONS ?
 Contact us:
 ledvance.za@ledvance.com
 +27 11 207 5600

In our daily business operations, we have to assume our environmental responsibility and use resources as efficiently as possible. Optimizing energy consumption is a top priority in lighting solutions for the retail industry.

No matter who may be involved – food discount stores, boutiques, furniture stores, DIY stores or garden centers – there is virtually nowhere else where the energy used in lighting can be saved so easily. Converting to environmentally friendly LED alternatives will have a positive effect on energy consumption and CO2 emissions.

LIGHT MANAGEMENT IS VIVARES

Discover VIVARES - our innovative feature brand for light management components and systems. VIVARES offers solutions for single rooms with a size of up to 200 m2 based on individually configured light management systems. From intuitive manual light control up-to automated lighting control with sensors to maximize energy savings.

One light management system for an entire floor? No problem for VIVARES DALI and Zigbee control units. One centrally controlled system can be used across multiple rooms (up to 1 000 m²) with optional IoT* functions. However, the lighting of each room within the floor solution can still be controlled and adjusted separately. Lighting options such as scenes or Tunable White and Human Centric Lighting personalize the light in rooms.



WOULD YOU LIKE TO KNOW MORE ABOUT OUR LED STRIP SYSTEM
 Contact us:
 ledvance.za@ledvance.com
 +27 11 207 5600



PERFORMANCE CLASS
 LEDVANCE
 5 year guarantee

MULTI COLOUR
 MULTI SELECT
 EVER LOOP

1 PERFORMANCE BULKHEAD ROUND

- Highly versatile due to selectable CCT and power steps (Multi Color / Multi Lumen) on the driver
- Flexible mounting patterns for convenient installation
- Suitable for use in dusty and damp locations thanks to high IP rating
- Suitable for use in public areas thanks to high IK rating
- Separate decor element available for an aesthetic and functional product design
- Colour available: Black and White
- Eyelid accessories available in Black and White
- Sensor version available



PERFORMANCE CLASS
 LEDVANCE
 5 year guarantee

MULTI COLOUR
 MULTI SELECT
 EVER LOOP

3 PERFORMANCE SURFACE FLAT

- Easy upgradeability of light source, driver and sensor (EVERLOOP design)
- Highly versatile due to selectable CCT and power steps (Multi Color / Multi Lumen) on the driver
- Indoor luminaire with high luminous efficacy up to 140 lm/W
- High color consistency with SDCM 3
- Tool-free electrical connection due to push button connector
- Very homogenous light with a slight backlight effect
- Extended services such as energy monitoring and remote maintenance possible with DALI versions
- 5 years guarantee

VALUE CLASS
 LEDVANCE
 3 year guarantee



2 VALUE COB STRIP

- Available in 5 W/m, 10 W/m and 15 W/m
- Low voltage 24V DC input
- IP20
- Standard CCT: 2700 K / 3000 K / 4000 K / 6500 K
- High color rendering: CRI > 90, R9 ≥ 50
- Small color tolerance: SDCM < 3 steps
- Beam angle 140 °
- Can operate with LEDVANCE 24V DC output driver
- Safety compliance certificate: CB
- EU RoHS 2.0
- 30,000 hours of lifetime
- Seamless line of light, without any dark spots, providing uniform lighting
- Can be used as direct lighting as it is glare-free, unlike SMD strips which are only suitable for indirect lighting
- High colour rendering and minimal colour tolerance deliver high quality lighting output
- Various lumen packages and CCT options, can meet different application requirements



PERFORMANCE CLASS
 LEDVANCE
 5 year guarantee

MULTI SELECT

4 PERFORMANCE SPOTLIGHT DARK

- Darklight: Special construction for enhanced low-glare light-comfort
- Stealth appearance thanks to extra small bezel
- Powerselect: Brightness adjustment via dip switches on the driver
- Easy replacement of external driver thanks to plug with bayonet lock
- Easy installation and electrical connection thanks to tool-free electrical connectors
- 5 years guarantee
- Color rendering index Ra: 90
- Type of protection: IP44 (room side)
- Beam angle: 36°
- Die-cast aluminium housing
- Silicon-pad protected springs
- Dimmable
- Through-wiring possible
- Colour options: Black, Silver and White

OUTDOOR LIGHTING

LED Luminaires: OUTDOOR LIGHTING



WOULD YOU LIKE TO KNOW MORE ABOUT OUTDOOR LIGHTING SOLUTIONS ?
Contact us:
ledvance.za@ledvance.com
+27 11 207 5600



Modern lighting technologies have gradually also conquered the night. Apart from decorative purposes, cleverly designed outdoor lighting ensures an increased sense of security especially in an urban setting: being able to clearly see what lies ahead gives employees and passers-by a good feeling especially in public spaces but also in the vicinity of stand-alone buildings.



PERFORMANCE GUARD RAIL LIGHT

- Road lighting LED module concept designed to reduce the overall cost considering the enhanced road lighting efficiency, infrastructure costs, energy savings and maintenance cost
- Excellent lighting distribution on the street thanks to the special optical system and the black PCB that decreases the random reflection of photons inside the device
- Improving road efficiency and visibility in presence of fog due to low height application that minimizes the reflected & scattered light
- Better control over light distribution in curved streets and roundabouts
- Innovative, ultra compact, lightweight outdoor LED street lighting module designed for roadways, tunnels, pedestrian areas and architectural applications
- Available with wattage: 11.6 W, 12.6 W, 15 W and 16 W
- Lumen output up to 1639 lm with 5 special lighting distribution options
- Available in CC & CV versions
- Type of protection: IP66
- Impact resistance: IK09
- Certificate: CB, RoHS

LEDVANCE PERFORMANCE CLASS IP66

WOULD YOU LIKE TO KNOW MORE ABOUT OUR LED GUARD RAIL LIGHT
Contact us:
ledvance.za@ledvance.com
+27 11 207 5600



LEDVANCE 5 year guarantee PERFORMANCE CLASS IP66



1 PERFORMANCE SOLAR STREETLIGHT

- All-in-one design, no wiring required, flexible installation
- Extremely high system luminous efficacy 185 lm-W to maximize the battery performance
- Rotatable LED module, ensures the light to reach the target surface amply
- Grade A bifacial monocrystalline solar panel, higher sunlight absorbing efficiency than single-sided monocrystalline solar panel
- Adjustable install arm, multi-angle adjustment, make solar panel easy to apply to sunlight trajectory from different directions
- Type of protection: IP66
- Impact resistance: IK08

LEDVANCE 3 year guarantee VALUE CLASS IP66



3 VALUE CANOPY

- Available in 60W, 95W, 145W — 200-240V AC input
- Standard CCT: 4000K and 5700K— Up to 135lm/w
- High color rendering: CRI ≥ 80— High power factor: PF≥0.9— 80,000hrs lifespan
- P66 IK08 protection
- High efficiency 135lm/w, low down the power to save energy
- 80,000hrs long lifetime reduces maintenance costs
- Safety compliance certificates: CB EMC ROHS



LEDVANCE 2 year guarantee VALUE CLASS IP65

2 VALUE HQL LED PRO

- Saves up to 78 % energy when used as replacement for mercury vapour lamps (HQL)
- Low maintenance costs thanks to long lifetime
- Instant 100 % light, no warm-up time
- Replacement for HQL: Suitable for operation with conventional control gear (CCG) for HQL or 230 V mains
- Replacement for other HID: Suitable for operation with line voltage without control gear
- Power factor: 0.9
- Type of protection: IP65
- High surge protection: up to 6 kV (L-N)

LEDVANCE 2 year guarantee ECO CLASS

IP66



4 ECO SOLAR FLOODLIGHT

- Die-cast aluminium housing ensures reliable operation
- Energy savings thanks to high system efficacy: up to 180lm/W
- 12 hours lighting per night to fulfill the whole night application
- Lamp body and solar panel split design, easy for charging and lighting
- Professional lighting distribution provides uniformity lighting
- Available in 4 sizes with 4 lumen packages
- Available in on-off and sensor version
- LiFeP04 battery charge-discharge cycle 2000 times
- Overcharge, over-discharge, overheat and short circuit protection
- Monocrystalline solar panel and UV resistant polycarbonate lens
- Remote control provided for easy control of operation

SPORTS LIGHTING

LED Luminaires: SPORTS LIGHTING



WOULD YOU LIKE TO KNOW MORE ABOUT OUTDOOR LIGHTING SOLUTIONS ?
 Contact us:
 ledvance.za@ledvance.com
 +27 11 207 5600



Sport needs rules. And especially when it comes to optimal lighting of sports venues, there are a variety of regulations and standards that need to be observed – from minimum values for illuminance and uniformity to glare restriction for the environment.

Whether it's football, handball, go-kart racing tracks or athletics – in order for a sporting event to be a complete success for players, athletes, referees and spectators, you also need great lighting at champion level.

PERFORMANCE FLOODLIGHT MAX

- Very bright, robust and durable
- Energy savings of up to 45 % compared to luminaires that use conventional discharge lamps
- 1-10 V Dimming or DMX Dimming Optional
- No upper light output ratio (ULOR 0%) when mounted at 0° tilt
- Low flicker light
- 5 years guarantee
- Modular, high-power floodlight with up to 135 lm/W
- Joint or separate installation with Floodlight Max power supply with up to 40 m distance
- Available with 10°, 30° and 60° symmetric beam angles, as well as 50°x110° asymmetric light distribution
- Mounting bracket for up to 180° tilting
- Highly-transparent, tempered glass diffuser



WOULD YOU LIKE TO KNOW MORE ABOUT OUR PERFORMANCE FLOODLIGHT MAX
 Contact us:
 ledvance.za@ledvance.com
 +27 11 207 5600



1

PERFORMANCE LOW BAY FLEX BALL PROOF

- Ball-proof luminaire with increased physical robustness according to DIN 18032-3 and DIN 57710-13)
- Economical thanks to high luminous efficacy up to 155 lm/W
- Easy and quick installation thanks to tool free connector box with 5- and 7-pole terminals
- Modern and robust design
- 5 years guarantee
- Ball-proof Low-bay luminaires for mounting heights up to ~10 m in 4000 K
- Through-wiring cable already installed
- Long Lifetime (L80/B10): up to 100,000 h
- High color consistency: ≤ 3 SDCM

3 VALUE MULTIPOWER FLOODLIGHT

- 100-277V AC input
- Selectable power 210W/250W/300W
- Selectable power 330W/420W/500W
- Standard CCT: 4000K, 6500K
- High color rendering: CRI≥80
- High power factor: PF≥0.90
- Up to 150lm/w 50,000hrs lifespan @35°
- IP66,IK08 protection, coastal grade coating
- Safety compliance : CB EMC RoHS 2.0
- 67% stock reduction thanks to selectable power
- Long lifetime of 50,000hrs reduces maintenance costs



2 VALUE FLOODLIGHT HIGH MAST 500W

- Low flicker light thanks to special electronic control gear
- Energy savings thanks to high system efficacy: up to 140 lm/W
- Optimized product logistic, luminaire heads and power supplies to be ordered separately in stand-alone packaging
- 5 years guarantee
- Symmetric and asymmetric light distribution for various application areas
- Cover made of high quality glass
- High-power floodlight with up to 140 lm/W
- Lifetime (L80/B50): up to 100,000 h (at 25 °C)
- Joint or separate installation with floodlight high mast power supply
- Highly-transparent, tempered glass diffuser



3

CLASSIC LAMPS

LED STICKS

EAN10	PRODUCT DESCRIPTION	lm	lm/w	°	CRI	t _h
4099854393792	LED STICK 7W WARM WHITE E27	735	105	200 °	80+	15,000
4099854393822	LED STICK 7W WARM WHITE B22D	735	105	200 °	80+	15,000
4099854393853	LED STICK 7W COOL WHITE E27	735	105	200 °	80+	15,000
4099854393884	LED STICK 7W COOL WHITE B22D	735	105	200 °	80+	15,000
4099854393914	LED STICK 7W DAYLIGHT E27	735	105	200 °	80+	15,000
4099854393945	LED STICK 7W DAYLIGHT B22D	735	105	200 °	80+	15,000
4099854393976	LED STICK 9W WARM WHITE E27	945	105	200 °	80+	15,000
4099854394003	LED STICK 9W WARM WHITE B22D	945	105	200 °	80+	15,000
4099854394034	LED STICK 9W COOL WHITE E27	945	105	200 °	80+	15,000
4099854394065	LED STICK 9W COOL WHITE B22D	945	105	200 °	80+	15,000
4099854394096	LED STICK 9W DAYLIGHT E27	945	105	200 °	80+	15,000
4099854394126	LED STICK 9W DAYLIGHT B22D	945	105	200 °	80+	15,000
4099854414916	LED STICK 13W WARM WHITE E27	1,365	105	200 °	80+	15,000
4099854414947	LED STICK 13W WARM WHITE B22D	1,365	105	200 °	80+	15,000
4099854415036	LED STICK 13W DAYLIGHT E27	1,365	105	200 °	80+	15,000
4099854415067	LED STICK 13W DAYLIGHT B22D	1,365	105	200 °	80+	15,000



E27



B22D

LED CLASSIC A LAMPS

EAN10	PRODUCT DESCRIPTION	lm	lm/w	°	CRI	t _h
4099854392405	LED ECO CLASSIC A 5W WARM WHITE E27	525	105	200 °	80+	15,000
4099854392436	LED ECO CLASSIC A 5W WARM WHITE B22D	525	105	200 °	80+	15,000
4099854392467	LED ECO CLASSIC A 5W DAYLIGHT E27	525	105	200 °	80+	15,000
4099854392498	LED ECO CLASSIC A 5W DAYLIGHT B22D	525	105	200 °	80+	15,000
4099854392542	LED ECO CLASSIC A 7W WARM WHITE E27	735	105	200 °	80+	15,000
4099854392573	LED ECO CLASSIC A 7W WARM WHITE B22D	735	105	200 °	80+	15,000
4099854392603	LED ECO CLASSIC A 7W DAYLIGHT E27	735	105	200 °	80+	15,000
4099854392634	LED ECO CLASSIC A 7W DAYLIGHT B22D	735	105	200 °	80+	15,000
4099854392665	LED ECO CLASSIC A 9W WARM WHITE E27	945	105	200 °	80+	15,000
4099854392696	LED ECO CLASSIC A 9W WARM WHITE B22D	945	105	200 °	80+	15,000
4099854392726	LED ECO CLASSIC A 9W DAYLIGHT E27	945	105	180 °	80+	15,000
4099854392757	LED ECO CLASSIC A 9W DAYLIGHT B22D	945	105	180 °	80+	15,000
4099854415449	LED ECO CLASSIC A 12W WARM WHITE E27	1,260	105	180 °	80+	15,000
4099854415470	LED ECO CLASSIC A 12W WARM WHITE B22D	1,260	105	200 °	80+	15,000
4099854415500	LED ECO CLASSIC A 12W DAYLIGHT E27	1,260	105	200 °	80+	15,000
4099854415531	LED ECO CLASSIC A 12W DAYLIGHT B22D	1,260	105	200 °	80+	15,000



E27



B22D

LED SPOTS

GU10, MR16, AR111 AND PAR38



EAN10	PRODUCT DESCRIPTION	lm	lm/w	°	CRI	Dim	t _h
4099854354700	LED SPOT 5W WARM WHITE GU10 DIM 36 DEG	450	90	36 °	80+	NO	15,000
4099854354724	LED SPOT 5W COOL WHITE GU10 DIM 36 DEG	450	90	36 °	80+	NO	15,000
4099854354748	LED SPOT 5W DAYLIGHT GU10 DIM 36 DEG	450	90	36 °	80+	NO	15,000
4099854354502	LED SPOT 5.5W WARM WHITE GU10 DIM 36 DEG	495	83	36 °	90+	YES	25,000
4099854354526	LED SPOT 5.5W COOL WHITE GU10 DIM 36 DEG	495	83	36 °	90+	YES	25,000
4099854354540	LED SPOT 5.5W DAYLIGHT GU10 DIM 36 DEG	495	83	36 °	90+	YES	25,000
4099854354588	LED SPOT 7.5W WARM WHITE GU10 DIM 36 DEG	675	84	36 °	90+	YES	25,000
4099854354601	LED SPOT 7.5W COOL WHITE GU10 DIM 36 DEG	675	84	36 °	90+	YES	25,000
4099854354625	LED SPOT 7.5W DAYLIGHT GU10 DIM 36 DEG	675	84	36 °	90+	YES	25,000
4058075540200	LED SPOT MR16 7.5W WARM WHITE GU5.3	700	88	36 °	90+	YES	25,000
4058075535374	LED SPOT MR16 7.5W DAYLIGHT GU5.3	720	90	36 °	90+	YES	25,000
4099854049163	LED SPOT AR111 11.7W WARM WHITE G53	800	67	40 °	90+	YES	40,000
4058075665934	LED SPOT PAR38 12W DAYLIGHT E27	1,035	86	30 °	80+	NO	25,000
4099854071270	LED SPOT PAR38 15.2W DIM WARM WHITE E27	1,035	86	30 °	80+	YES	30,000

LED TUBES

T8 , T5's AND STARTERS



EAN10	PRODUCT DESCRIPTION	lm	lm/w	°	CRI	IP	t _{inj}
4058075429420	T8 LED ECO TUBE 0.6M (2FT) 9W WARM WHITE	855	95	> 160.00 °	80+	20	15,000
4058075429444	T8 LED ECO TUBE 0.6M (2FT) 9W COOL WHITE	900	100	> 160.00 °	80+	20	15,000
4058075429468	T8 LED ECO TUBE 0.6M (2FT) 9W DAYLIGHT	900	100	> 160.00 °	80+	20	15,000
4058075429482	T8 LED ECO TUBE 1.2M (4FT) 18W WARM WHITE	1,710	95	> 160.00 °	80+	20	15,000
4058075429505	T8 LED ECO TUBE 1.2M (4FT) 18W COOLWHITE	1,800	100	> 160.00 °	80+	20	15,000
4058075429529	T8 LED ECO TUBE 1.2M (4FT) 18W DAYLIGHT	1,800	100	> 160.00 °	80+	20	15,000
4058075429543	T8 LED ECO TUBE 1.5M (5FT) 20W WARM WHITE	1,900	95	> 160.00 °	80+	20	15,000
4058075437340	T8 LED ECO TUBE 1.5M (5FT) 20W COOLWHITE	2,000	100	> 160.00 °	80+	20	15,000
4058075437364	T8 LED ECO TUBE 1.5M (5FT) 20W DAYLIGHT	2,000	100	> 160.00 °	80+	20	15,000
4099854039126	T8 LED VALUE TUBE 0.9M (3FT) 10W COOL WHITE	1,200	120	> 190.00 °	80+	20	30,000
4099854039164	T8 LED VALUE TUBE 0.9M (3FT) 10W DAYLIGHT	1,200	120	> 190.00 °	80+	20	30,000
4099854087363	T8 LED ADVANCE TUBE 0.6M (2F) 7.3W COOL WHITE	1,100	157	> 190.00 °	≥80	20	60,000
4058075471641	T8 LED ADVANCE TUBE 0.6M (2FT) 7.3W DAYLIGHT	1,100	157	> 190.00 °	80+	20	50,000
4058075612198	T8 LED ADVANCE TUBE 0.9M (3FT) 10.3W COOL WHITE	1,700	170	> 190.00 °	80+	20	75,000
4099854087462	T8 LED ADVANCE TUBE 1.2M (4FT) 14W 230V COOL WHITE	2,100	150	> 190.00 °	≥80	20	60,000
4099854087486	T8 LED ADVANCE TUBE 1.2M (4FT) 14W 230V DAYLIGHT	2,100	150	> 190.00 °	≥80	20	60,000
4099854087806	T8 LED ADVANCE TUBE 1.5M(5FT) 20,6W 230V COOL WHITE	3,100	148	> 190.00 °	≥80	20	60,000
4099854087820	T8 LED ADVANCE TUBE 1.5M (5FT) 20,6W 230V DAYLIGHT	3,100	148	> 190.00 °	≥80	20	60,000
4099854045226	T8 LED FOOD TUBE 0.9 (3FT) 7.9W WARM WHITE	750	94	190 °	≥80	20	60,000
4099854045004	T8 LED FOOD TUBE 1.2M (4FT) 11.6W WARM WHITE	1,100	92	190 °	≥80	20	60,000
4099854045127	T8 LED FOOD TUBE 1.5M (5FT) 17.9W WARM WHITE	1,700	94	190 °	≥80	20	60,000
4058075757226	T5 LED ECO TUBE 0.6M (2FT) 8W DAYLIGHT	900	113	> 160.00 °	80+	20	20,000
4058075757240	T5 LED ECO TUBE 1.2M (4FT) 28W COOL WHITE	1,800	113	> 160.00 °	80+	20	20,000
4058075757264	T5 LED ECO TUBE 1.2M (4FT) 28W DAYLIGHT	1,800	113	> 160.00 °	80+	20	20,000
4058075757288	T5 LED ECO TUBE 1.5M (5FT) 18W COOL WHITE	2,000	111	> 160.00 °	80+	20	20,000
4058075757301	T5 LED ECO TUBE 1.5M (5FT) 18W DAYLIGHT	2,000	111	> 160.00 °	80+	20	20,000
4058075757325	T5 LED ECO TUBE 1.2M (4FT) 26W COOL WHITE	2,860	110	> 160.00 °	80+	20	20,000
4058075757349	T5 LED ECO TUBE 1.2M (4FT) 26W DAYLIGHT	2,860	110	> 160.00 °	80+	20	20,000
4058075482876	LED TUBE STARTER	-	-	-	-	-	-

LAMPS WITH SPECIAL FUNCTIONS



EAN10	PRODUCT DESCRIPTION	lm	lm/w	°	CRI	IP	t _{inj}
4058075683198	LED HIGH WATT LAMP 40W DAYLIGHT E27	4,000	100	180 °	80+	IP20	12,000
4058075683310	LED HIGH WATT LAMP 80W DAYLIGHT E40	8,000	100	180 °	80+	IP20	12,000
4099854431920	LED DAY NIGHT SENSOR CLASSIC A 9W WARM WHITE B22	810	90	180 °	80+	-	15,000
4099854431968	LED DAY NIGHT SENSOR CLASSIC A 9W WARM WHITE E27	810	90	180 °	80+	-	15,000
4099854432002	LED DAY NIGHT SENSOR CLASSIC A 9W COOL WHITE B22	810	90	180 °	80+	-	15,000
4099854432026	LED DAY NIGHT SENSOR CLASSIC A 9W COOL WHITE E27	810	90	180 °	80+	-	15,000
4099854071973	LED NAV 50 21W E27 WARM WHITE	3,600	171	~360 °	80+	IP65	25,000
4099854071997	LED NAV 50 21W E27 COOL WHITE	4,000	190	~360 °	80+	IP65	25,000
4099854072017	LED NAV 70 35W E27 WARM WHITE	5,400	154	~360 °	80+	IP65	25,000
4099854072031	LED NAV 70 35W E27 COOL WHITE	6,000	171	~360 °	80+	IP65	25,000
4099854072055	LED NAV 100 41W E40 WARM WHITE	7,000	171	~360 °	80+	IP65	25,000
4099854072079	LED NAV 100 41W E40 COOL WHITE	7,500	183	~360 °	80+	IP65	25,000

LUMINAIRES DOWNLIGHTS



EAN10	PRODUCT DESCRIPTION	lm	lm/w	°	CRI	IP	t _{inj}
4058075680715	LED ECO RECESSED CEILING DOWNLIGHT R40 8W COOL WHITE	680	85	110 °	80+	IP44 (F)	25,000
4058075680739	LED ECO RECESSED CEILING DOWNLIGHT R40 8W DAYLIGHT	680	85	110 °	80+	IP44 (F)	25,000
4058075680852	LED ECO RECESSED CEILING DOWNLIGHT R60 18W COOL WHITE	1,620	90	110 °	80+	IP44 (F)	25,000
4058075680876	LED ECO RECESSED CEILING DOWNLIGHT R60 18W DAYLIGHT	1,620	90	110 °	80+	IP44 (F)	25,000
4058075680937	LED ECO RECESSED CEILING DOWNLIGHT R80 24W COOL WHITE	2,160	90	110 °	80+	IP44 (F)	25,000
4058075680951	LED ECO RECESSED CEILING DOWNLIGHT R80 24W DAYLIGHT	2,160	90	110 °	80+	IP44 (F)	25,000

LINEARS



EAN10	PRODUCT DESCRIPTION	lm	lm/w	°	CRI	IP		t _h
4058075540811	LED VALUE LINEAR BLADE 0.6M 16W DAYLIGHT	1,600	100	120 °	80+	IP40	-	20,000
4058075540859	LED VALUE LINEAR BLADE 1.2M 30W COOL WHITE	3,000	100	120 °	80+	IP40	-	20,000
4058075540873	LED VALUE LINEAR BLADE 1.2M 30W DAYLIGHT	3,000	100	120 °	80+	IP40	-	20,000
4058075122161	LED SURFACE MOUNT LINEAR 33W 1200MM COOL WHITE	4,000	121	110 °	80+	IP20	-	50,000
4058075122284	LED SURFACE MOUNT LINEAR 60W 1500MM COOL WHITE	7,100	118	110 °	80+	IP20	-	50,000

DAMPPROOF



EAN10	PRODUCT DESCRIPTION	lm	lm/w	°	CRI	IP		t _h
4099854139123	LED PERFORMANCE DAMPPROOF 1.2M 30W TRI COLOUR	4,500	150	120 °	80+	IP65	-	50,000
4099854139147	LED PERFORMANCE DAMPPROOF 1.5M 43W TRI COLOUR	6,450	150	120 °	80+	IP65	-	50,000
4058075548664	DAMPPROOF HOUSING 2 x 1200MM	-	-	-	-	IP65	-	-
4058075544376	DAMPPROOF HOUSING 2 x 1500MM	-	-	-	-	IP65	-	-

PANELS



EAN10	PRODUCT DESCRIPTION	lm	lm/w	°	CRI	IP		t _h
4099854031137	LED ECO PANEL 36W TRI COLOUR 600X600	3,240	90	110 °	80+	IP40(-Front)/IP-20(Back)	Yes, with dim-mable ballast	50,000
4099854031175	LED ECO PANEL 65W TRI COLOUR 1200X600	5,850	90	110 °	80+	IP40(-Front)/IP-20(Back)	Yes, with dim-mable ballast	50,000
4099854031151	LED ECO PANEL 36W TRI COLOUR 1200 x 300	3,240	90	110 °	80+	IP40(-Front)/IP-20(Back)	Yes, with dim-mable ballast	50,000
4099854088599	LED PANEL 36W DRIVER	-	-	-	-	-	-	50,000
4099854088605	LED PANEL 65W DRIVER	-	-	-	-	-	-	50,000
4058075699502	LED PANEL SURFACE MOUNT KIT 600X600	-	-	-	-	-	-	-
4099854018497	LED PANEL SURFACE MOUNT KIT 1200X300	-	-	-	-	-	-	-
4058075389823	LED PANEL SURFACE MOUNT KIT 1200X600	-	-	-	-	-	-	-
4058075330351	LED PANEL SUSPENSION KIT	-	-	-	-	-	-	-
4099854020957	LED PANEL RECESSED MOUNT CLIPS	-	-	-	-	-	-	-

CEILING



EAN10	PRODUCT DESCRIPTION	lm	lm/w	°	CRI	IP		t _h
4099854018046	LED VALUE CEILING MOUNT LUMINAIRE 10W TRI COLOUR	800 / 850	80 / 85	120 °	80+	IP20	-	25,000
4099854018152	LED VALUE CEILING MOUNT LUMINAIRE 20W TRI COLOUR	1500 / 1650	75 / 82.5	120 °	80+	IP20	-	25,000
4099854018237	LED VALUE CEILING MOUNT LUMINAIRE 30W TRI COLOUR	2250 / 2400	75 / 80	120 °	80+	IP20	-	25,000

FLOODLIGHTS



EAN10	PRODUCT DESCRIPTION	lm	lm/w	°	CRI	IP		t _h
4058075729582	LED ECO LITE FLOODLIGHT 10W WARM WHITE	800	80	110 °	80+	IP65	-	20,000
4058075729407	LED ECO LITE FLOODLIGHT 10W DAYLIGHT	800	80	110 °	80+	IP65	-	20,000
4058075729605	LED ECO LITE FLOODLIGHT 20W WARM WHITE	1,600	80	110 °	80+	IP65	-	20,000
4058075729421	LED ECO LITE FLOODLIGHT 20W DAYLIGHT	1,600	80	110 °	80+	IP65	-	20,000
4058075729629	LED ECO LITE FLOODLIGHT 30W WARM WHITE	2,400	80	110 °	80+	IP65	-	20,000
4058075729445	LED ECO LITE FLOODLIGHT 30W DAYLIGHT	2,400	80	110 °	80+	IP65	-	20,000
4058075729643	LED ECO LITE FLOODLIGHT 50W WARM WHITE	4,000	80	110 °	80+	IP65	-	20,000
4058075729469	LED ECO LITE FLOODLIGHT 50W DAYLIGHT	4,000	80	110 °	80+	IP65	-	20,000
4058075729483	LED ECO LITE FLOODLIGHT 100W DAYLIGHT	8,000	80	110 °	80+	IP65	-	20,000
4058075729544	LED ECO LITE FLOODLIGHT 150W DAYLIGHT	12,000	80	110 °	80+	IP65	-	20,000
4058075729568	LED ECO LITE FLOODLIGHT 200W DAYLIGHT	16,000	80	110 °	80+	IP65	-	20,000
4099854257100	LED PERFORMANCE FLOODLIGHT 10W DAYLIGHT	1,400	140	100°	80+	IP65	-	100,000
4099854257162	LED PERFORMANCE FLOODLIGHT 17W DAYLIGHT	2,400	140	100°	80+	IP65	-	100,000
4099854257223	LED PERFORMANCE FLOODLIGHT 25W DAYLIGHT	3,500	140	100°	80+	IP65	-	100,000
4099854257261	LED PERFORMANCE FLOODLIGHT 45W COOL WHITE	6,200	140	100°	80+	IP65	-	100,000
4099854257285	LED PERFORMANCE FLOODLIGHT 45W DAYLIGHT	6,200	140	100°	80+	IP65	-	100,000
4099854257384	LED PERFORMANCE FLOODLIGHT 70W COOL WHITE	10,000	140	100°	80+	IP65	-	100,000
4099854257407	LED PERFORMANCE FLOODLIGHT 70W DAYLIGHT	10,000	140	100°	80+	IP65	-	100,000
4099854257445	LED PERFORMANCE FLOODLIGHT 110W COOLWHITE	15,000	140	100°	80+	IP65	-	100,000
4099854257513	LED PERFORMANCE FLOODLIGHT 140W COOL WHITE	20,000	140	100°	80+	IP65	-	100,000
4099854257520	LED PERFORMANCE FLOODLIGHT 140W DAYLIGHT	20,000	140	100°	80+	IP65	-	100,000
4099854257568	LED PERFORMANCE FLOODLIGHT 175W COOL WHITE	25,000	140	100°	80+	IP65	-	100,000
4099854257582	LED PERFORMANCE FLOODLIGHT 175W DAYLIGHT	25,000	140	100°	80+	IP65	-	100,000
4099854287206	LED ECO SOLAR FLOODLIGHT 1000 LM DAYLIGHT	1,000	180	80°	70+	IP66	YES	30,000
4099854287268	LED ECO SOLAR FLOODLIGHT 2000 LM DAYLIGHT	2,000	180	80°	70+	IP66	YES	30,000
4099854287329	LED ECO SOLAR FLOODLIGHT 3000 LM DAYLIGHT	3,000	180	80°	70+	IP66	YES	30,000

HIGHBAYS



EAN10	PRODUCT DESCRIPTION	lm	lm/w	°	CRI	IP	Dimmable	t ₉₀
4058075726093	LED PERFORMANCE HIGHBAY 150W COOL WHITE	24,000	160	90°	80+	IP66	Yes	100,000
4058075726000	LED PERFORMANCE HIGHBAY 150W DAYLIGHT	24,000	160	90°	80+	IP66	Yes	100,000
4099854115646	LED PERFORMANCE HIGHBAY 60W / 80W / 100W TRI COLOUR	9 000 / 12 000 / 15 000	150	-	80+	IP65	-	50,000
4099854115639	LED PERFORMANCE HIGHBAY 125W / 150W / 200W TRI COLOUR	18 750 / 22 500 / 30 000	150	-	80+	IP65	-	50,000
4099854182549	LED CANOPY LUMINAIRE 95W COOL WHITE	12,825	135	120°	80+	IP66	-	80,000
4099854182587	LED CANOPY LUMINAIRE 145W COOL WHITE	19,575	135	120°	-	IP66	-	80,000
4099854194634	LED CANOPY LUMINAIRE FRAME	-	-	-	80+	-	-	80,000

ELECTRONIC COMPONENTS

MODULES, FLEX AND DRIVERS



EAN10	PRODUCT DESCRIPTION	lm	lm/w	°	CRI	IP	Dimmable	t ₉₀
4058075189751	LED CIRCULAR RETROFIT MODULE 12W COOL WHITE	1,050	88	160°	80+	IP20	No	15,000
4058075189843	LED CIRCULAR RETROFIT MODULE 18W COOL WHITE	1,650	92	160°	80+	IP20	No	15,000
4058075189935	LED CIRCULAR RETROFIT MODULE 24W COOL WHITE	2,200	92	160°	80+	IP20	No	15,000
4058075728202	LED FLEX HIGH OUTPUT 6W WARM WHITE 220V - 240V 50 M	260 / M	43	120°	80+	IP65	No	20,000
4058075728219	LED FLEX HIGH OUTPUT 6W COOL WHITE 220V - 240V 50 M	260 / M	43	120°	80+	IP65	No	20,000
4058075728226	LED FLEX HIGH OUTPUT 6W DAYLIGHT 220V - 240V 50 M	260 / M	43	120°	80+	IP65	No	20,000
4058075742802	LED FLEX HIGH OUTPUT MAINS PLUG	-	-	-	-	-	-	-
4058075743441	LED FLEX HIGH OUTPUT MIDDLE CONNECTOR	-	-	-	-	-	-	-
4058075743533	LED FLEX HIGH OUTPUT END CAP	-	-	-	-	-	-	-
4058075743519	LED FLEX HIGH OUTPUT MOUNTING CLIP KIT	-	-	-	-	-	-	-

MODULES, FLEX AND DRIVERS

EAN10	PRODUCT DESCRIPTION	lm	lm/w	°	CRI	IP	Dimmable	t ₉₀
4058075019669	LED FLEX 22W DAYLIGHT 24V (400LM / M - 5M ROLL)	400 / M	88	120°	80+	IP20	Yes, with dimmable ballast	30,000
4099854007293	LED FLEX 22W WARM WHITE 24V (520LM / M - 5M ROLL)	520 / M	116	120°	90+	IP20	Yes, with dimmable ballast	30,000
4099854007323	LED FLEX 22W COOL WHITE 24V (570LM / M - 5M ROLL)	570 / M	127	120°	90+	IP20	Yes, with dimmable ballast	30,000
4058075019782	LED FLEX 45W DAYLIGHT 24V (900LM / M - 5M ROLL)	900 / M	100	120°	80+	IP20	Yes, with dimmable ballast	30,000
4099854007446	LED FLEX 43W WARM WHITE 24V (950LM / M - 5M ROLL)	950 / M	112	120°	90+	IP20	Yes, with dimmable ballast	30,000
4099854007477	LED FLEX 43W COOL WHITE 24V (1070LM / M - 5M ROLL)	1070 / M	126	120°	90+	IP20	Yes, with dimmable ballast	30,000
4099854176838	LED FLEX COB 5W WARM WHITE 24V (450LM / M - 5M ROLL)	450 / M	90	120°	90+	IP20	Yes, with dimmable ballast	30,000
4099854176876	LED FLEX COB 5W COOL WHITE 24V (500LM / M - 5M ROLL)	500 / M	100	120°	90+	IP20	Yes, with dimmable ballast	30,000
4099854176913	LED FLEX COB 5W DAYLIGHT 24V (525LM / M - 5M ROLL)	525 / M	105	120°	90+	IP20	Yes, with dimmable ballast	30,000
4099854176951	LED FLEX COB 10W WARM WHITE 24V (850LM / M - 5M ROLL)	850 / M	75	120°	90+	IP20	Yes, with dimmable ballast	30,000
4099854176999	LED FLEX COB 10W COOL WHITE 24V (900LM / M - 5M ROLL)	900 / M	85	120°	90+	IP20	Yes, with dimmable ballast	30,000
4099854177033	LED FLEX COB 10W DAYLIGHT 24V (950LM / M - 5M ROLL)	950 / M	95	120°	90+	IP20	Yes, with dimmable ballast	30,000
4099854200601	LED FLEX COB INTERCONNECT ACCESSORY	-	-	-	-	-	-	-
4099854200632	LED FLEX COB FEED CONNECTOR ACCESSORY	-	-	-	-	-	-	-
4099854200663	LED FLEX COB JUMPER CONNECTOR ACCESSORY	-	-	-	-	-	-	-
4099854200694	LED FLEX COB CORNER CONNECTOR ACCESSORY	-	-	-	-	-	-	-
4058075549807	LED VALUE DRIVER 30W 24V CONSTANT VOLTAGE	-	-	-	-	IP20	-	30,000
4099854203299	LED VALUE DRIVER 30W 24V CONSTANT VOLTAGE	-	-	-	-	IP20	No	30,000
4099854203312	LED VALUE DRIVER 60W 24V CONSTANT VOLTAGE	-	-	-	-	IP20	No	30,000
4099854203336	LED VALUE DRIVER 120W 24V CONSTANT VOLTAGE	-	-	-	-	IP20	No	30,000
4099854203350	LED VALUE DRIVER 150W 24V CONSTANT VOLTAGE	-	-	-	-	IP20	No	30,000
4058075547261	LED PRO DRIVER 20W 500mA CONSTANT CURRENT	-	-	-	-	IP67	-	50,000
4058075547308	LED PRO DRIVER 35W 800mA CONSTANT CURRENT	-	-	-	-	IP67	-	50,000
4058075547322	LED PRO DRIVER 40W 950mA CONSTANT CURRENT	-	-	-	-	IP67	No	50,000
4058075547360	LED PRO DRIVER 50W 1000mA CONSTANT CURRENT	-	-	-	-	IP67	-	50,000
4058075513358	LED DRIVER 60W 1000mA CONSTANT CURRENT DIMMABLE	-	-	-	-	IP20	Yes	50,000

ADVANCING SOLAR ENERGY

LEDVANCE RENEWABLES



LEDVANCE stands for advancing light. Now it also stands for ADVANCING SOLAR ENERGY. Why is that? We are lighting enthusiasts. Sunlight is our inspiration. We bring light into people's lives and are driven by the goal of increasing our impact on Net Zero. By harnessing the power of the sun, we enable private and business customers to generate their own clean energy, reduce their dependence on traditional energy sources and minimize their impact on the environment – we fuel people's lives with smart energy. LEDVANCE offers a unique vertically integrated solution for the building sector covering energy supply, energy storage, energy use and integration with power systems.

LEDVANCE Renewables not only drives positive change, but also contributes to a brighter, greener future for our planet.

PRODUCT DESCRIPTION

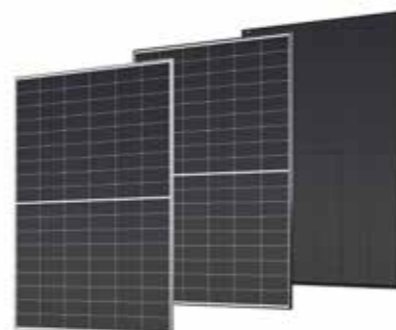
SOLAR PANEL 580W BI FACIAL



WOULD YOU LIKE TO KNOW MORE ABOUT LEDVANCE RENEWABLES
Contact us:
ledvance.za@ledvance.com
+27 11 207 5600



WOULD YOU LIKE TO KNOW MORE ABOUT SOLAR PANEL STOCK?
Contact us:
ledvance.za@ledvance.com
+27 11 207 5600



SYMBOLS

lm LUMENS

lm/w LUMENS PER WATT

° BEAM ANGLE

CRI COLOUR RENDERING INDEX

IP PROTECTION RATING

☺ DIMMABLE

t_{ln} LIFESPAN (L70B50)



LEDVANCE South Africa
Emerald Park Block 2
22 Reedbuck Crescent
Corporate Park South
Midrand, 1683, RSA
Phone +27 11 207 -5600
www.ledvance.com