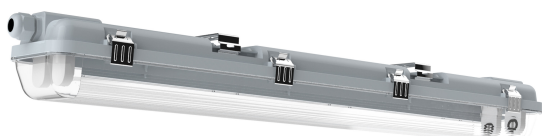


PRODUCT DATASHEET

LED ECO DAMPPROOF HOUSING 06X2 WMT

LED ECO DAMPPROOF HOUSING GEN2 WMT | Damp-proof luminaires



Areas of application

- Industrial and storage facilities
- Car parks and underpasses
- Garages
- Workshops, assembly lines

Product benefits

- UV stabilized, impact resistant polycarbonate diffuser and body
- PC clips and stainless-steel clips
- Fused design to offer protection when inserting traditional T8 florescent tubes by mistake
- Designed to work with IEC 62776 compliant LED T8 with AC input on one end

Product features

- 2 series to choose from: with and without metal tray in the housing
- Available with: 2 ft, 4 ft and 5 ft
- 70 mm full height housing design in all models
- Available in 1 lamp & 2 lamps versions
- Type of protection: IP65
- Impact resistance: IK08



TECHNICAL DATA

Dimensions & Weight

Length	651.00 mm
Width	102.00 mm
Height	70.00 mm
Product weight	840.00 g

LDECO DP 06X2 HOUSING WMT
G2

Materials & Colors

Product color	Gray
Housing color	Gray
Body material	Polycarbonate (PC)
Mercury content	0.0 mg

Application & Mounting

Type of connection	Terminal, 2-Pole (L, N)
Type of protection	IP65
Protection class IK (shock resistance)	IK08
Dimmable	No
Mounting type	Suspended/Surface
Mounting location	Ceiling / Wall

LOGISTICAL DATA

Product code	Packaging unit (Pieces/Unit)	Dimensions (length x width x height)	Gross weight	Volume
4058075544420	Folding box 1	110 mm x 79 mm x 655 mm	1018.00 g	5.69 dm ³
4058075544437	Shipping box 6	672 mm x 236 mm x 265 mm	6725.00 g	42.03 dm ³

The mentioned product code describes the smallest quantity unit which can be ordered. One shipping unit can contain one or more single products. When placing an order, for the quantity please enter single or multiples of a shipping unit.

DISCLAIMER

Subject to change without notice. Errors and omission excepted. Always make sure to use the most recent release.