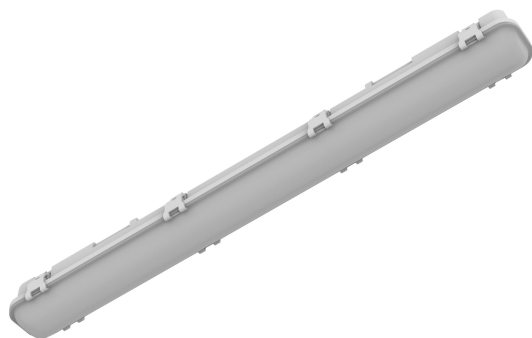


PRODUCT DATASHEET

LED VALUE DAMPPROOF CLASSIC 600 16W 840

LED VALUE DAMP PROOF CLASSIC | Damp-proof luminaires



Areas of application

- Industrial and storage facilities
- Car parks and underpasses
- Garages
- Workshops, assembly lines

Product benefits

- UV-stabilized polycarbonate opal diffuser for uniform light distribution and long durability
- Classic structural design meets the needs of most customers in the market
- Long lifetime reduces maintenance cost

Product features

- Class I Luminaires
- Available in 3 length options: 600 mm, 1200 mm, 1500 mm
- 3 lumen packages: 16W 1600lm, 32W 3200lm, 40W 4000lm
- Standard CCT: 6500 K and 4000 K
- Lifetime (L70/B50): up to 30,000 h
- Color rendering index R_a : > 80
- Type of protection: IP65
- Impact resistance: IK08
- Certificate: CB, RoHS

TECHNICAL DATA

Electrical data

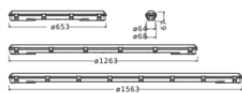
| | |
|------------------|-------------|
| Nominal wattage | 16.00 W |
| Nominal voltage | 220...240 V |
| Mains frequency | 50...60 Hz |
| Nominal current | 140.000 mA |
| Protection class | I |

Photometrical data

| | |
|--------------------------|----------|
| Luminous flux | 1600 lm |
| Luminous efficacy | 100 lm/W |
| Color temperature | 4000 K |
| Color rendering index Ra | > 80 |
| Beam angle | 120 ° |

Dimensions & Weight

| | |
|----------------|-----------|
| Length | 653.00 mm |
| Width | 68.00 mm |
| Height | 67.00 mm |
| Product weight | 591.00 g |



VALUE DP CLASSIC

Materials & Colors

| | |
|-----------------|---------|
| Product color | Gray |
| Housing color | Gray |
| Body material | Plastic |
| Mercury content | 0.0 mg |



Application & Mounting

| | |
|-------------------------|-------------------|
| Type of protection | IP65 |
| Dimmable | No |
| Mounting type | Surface/Suspended |
| Application environment | Indoor |

LED module replaceable

Not replaceable

DOWNLOAD DATA

| Documents and certificates | | Document name |
|--|--|----------------------|
|  | User Instruction / Safety Instructions | LDVAL DP UI |
| Photometric and lighting design files | | Document name |
|  | IES file (IES) | LDVAL DP 600 16W 840 |

LOGISTICAL DATA

| Product code | Packaging unit (Pieces/Unit) | Dimensions (length x width x height) | Gross weight | Volume |
|---------------|------------------------------|--------------------------------------|--------------|-----------------------|
| 4099854110368 | Folding box 1 | 71 mm x 69 mm x 655 mm | 646.00 g | 3.21 dm ³ |
| 4099854110375 | Shipping box 12 | 675 mm x 305 mm x 235 mm | 8432.00 g | 48.38 dm ³ |

The mentioned product code describes the smallest quantity unit which can be ordered. One shipping unit can contain one or more single products. When placing an order, for the quantity please enter single or multiples of a shipping unit.

DISCLAIMER

Subject to change without notice. Errors and omission excepted. Always make sure to use the most recent release.