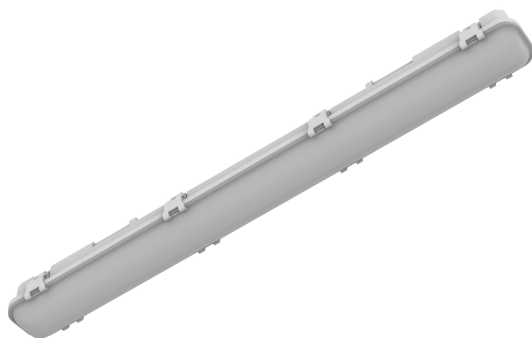


PRODUCT DATASHEET

LED VALUE DAMPPROOF CLASSIC 1200

32W 865

LED VALUE DAMP PROOF CLASSIC | Damp-proof luminaires



Areas of application

- Industrial and storage facilities
- Car parks and underpasses
- Garages
- Workshops, assembly lines

Product benefits

- UV-stabilized polycarbonate opal diffuser for uniform light distribution and long durability
- Classic structural design meets the needs of most customers in the market
- Long lifetime reduces maintenance cost

Product features

- Class I Luminaires
- Available in 3 length options: 600 mm, 1200 mm, 1500 mm
- 3 lumen packages: 16W 1600lm, 32W 3200lm, 40W 4000lm
- Standard CCT: 6500 K and 4000 K
- Lifetime (L70/B50): up to 30,000 h
- Color rendering index R_a : > 80
- Type of protection: IP65
- Impact resistance: IK08
- Certificate: CB, RoHS

TECHNICAL DATA

Electrical data

Nominal wattage	32.00 W
Nominal voltage	220...240 V
Mains frequency	50...60 Hz
Nominal current	291.000 mA
Protection class	I

Photometrical data

Luminous flux	3200 lm
Luminous efficacy	100 lm/W
Color temperature	6500 K
Color rendering index Ra	> 80
Beam angle	120 °

Dimensions & Weight

Length	1263.00 mm
Width	68.00 mm
Height	67.00 mm
Product weight	1060.00 g



VALUE DP CLASSIC

Materials & Colors


Product color	Gray
Housing color	Gray
Body material	Plastic
Mercury content	0.0 mg


Application & Mounting

Type of protection	IP65
Dimmable	No
Mounting type	Surface/Suspended
Application environment	Indoor

Replaceable light source	No
--------------------------	----

DOWNLOAD DATA

Documents and certificates		Document name
	User instruction / safety instructions	LDVAL DP UI

Photometric and lighting design files		Document name
	IES file (IES)	LDVAL DP 1200 32W 865

LOGISTICAL DATA

Product code	Packaging unit (Pieces/Unit)	Dimensions (length x width x height)	Gross weight	Volume
4099854110382	Folding box 1	71 mm x 69 mm x 1,265 mm	1115.00 g	6.20 dm ³
4099854110399	Shipping box 9	1,285 mm x 230 mm x 235 mm	10935.00 g	69.45 dm ³

The mentioned product code describes the smallest quantity unit which can be ordered. One shipping unit can contain one or more single products. When placing an order, for the quantity please enter single or multiples of a shipping unit.

DISCLAIMER

Subject to change without notice. Errors and omission excepted. Always make sure to use the most recent release.