



# PRODUCT DATASHEET

## LED PFM DL 12.50 W 6500 K G2S

LED PERFORMANCE DOWNLIGHT G2S | LED downlight luminaires



---

### Areas of application

- Offices
- Shopping malls
- Retail
- Hospitality

---

### Product benefits

- Stylish design
- Die-cast aluminum housing for improved heat dissipation
- Good glare reduction ( $UGR < 19$ ) and cut off angle up to  $30^\circ$  for comfortable indoor lighting
- Energy savings thanks to high system efficacy: up to 120 lm/W
- External driver design allows for flexible change of control gear
- Low maintenance and operation costs due to long lifetime of LED
- Type of protection: IP54 (room side) provides additional protection against humidity

---

### Product features

- Available with diameter: 4 inch, 6 inch and 8 inch
- Available with color temperature: 3,000 K, 4,000 K, 6,500 K
- System up with LEDVANCE DRIVER (Driver not included)
- Color rendering index  $R_a$ :  $> 80$
- Initial color consistency:  $< 5$  SDCM
- Long lifetime up to 50,000 h



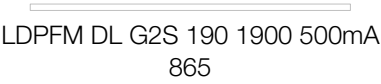
TECHNICAL DATA

Electrical data

Nominal wattage	12.50 W
Nominal voltage	26,5 V
Nominal current	450.000 mA
Power factor $\lambda$	> 0.90
Protection class	III
Operating mode	External LED driver

Photometrical data

Luminous flux	1770 lm
Luminous efficacy	141 lm/W
Color temperature	6500 K
Light color (designation)	Daylight
Color rendering index Ra	80
Standard deviation of color matching	< 5 sdc <sub>m</sub>
Beam angle	65 °
UGR	< 19



Dimensions & Weight

Diameter	160.00 mm
Height	65.00 mm
Product weight	365.00 g



Materials & Colors

Product color	White
Housing color	White
Body material	Aluminum
Cover material	Polymethylmethacrylate (PMMA)
Mercury content	0.0 mg

### Application & Mounting

Ambient temperature range	-20...+45 °C
Temperature range at storage	-20...+70 °C
Type of connection	Cable, 2-pole
Type of protection	IP54/IP20
Dimmable	No
Mounting type	Recessed
Mounting location	Ceiling
Application environment	Indoor
Mounting diameter	150.0...160.0 mm
Mounting depth	> 30 mm
Replaceable light source	No

### Lifespan


Lifespan L70/B50 at 25 °C	50000 h <sup>1)</sup>
---------------------------	-----------------------




<sup>1)</sup> t[h]: L70 / B50 @ 25 °C (Ta), t[h]: L80 / B10 @ 25 °C (Ta), t[h]: L90 / B10 @ 25 °C (Ta)

### Certificates & Standards

Replaceable light source (EPREL)	Not replaceable
----------------------------------	-----------------

### DOWNLOAD DATA

Documents and certificates		Document name
	User instruction / safety instructions	LDPFM DL 105 G2S

Photometric and lighting design files		Document name
	IES file (IES)	LDPFM DL 150 865 G2S
	IES file (IES)	LDPFM DL 150 865 G2S
	Light distribution curve type polar	LDPFM DL G2S 190 1900 500mA 865

### LOGISTICAL DATA

Product code	Packaging unit (Pieces/Unit)	Dimensions (length x width x height)	Gross weight	Volume
4058075427617	Folding box 1	215 mm x 84 mm x 219 mm	565.00 g	3.96 dm <sup>3</sup>
4058075427624	Shipping box 24	526 mm x 449 mm x 468 mm	14966.00 g	110.53 dm <sup>3</sup>

The mentioned product code describes the smallest quantity unit which can be ordered. One shipping unit can contain one or more single products. When placing an order, for the quantity please enter single or multiples of a shipping unit.

DISCLAIMER

Subject to change without notice. Errors and omission excepted. Always make sure to use the most recent release.