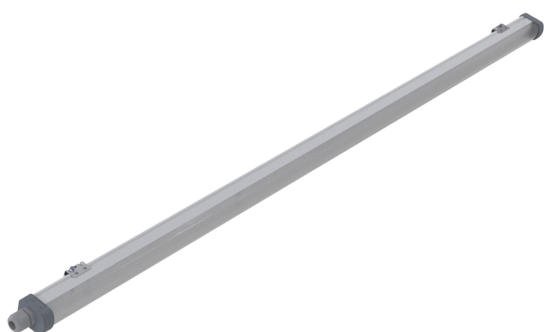


PRODUCT DATASHEET

LED VAL DP SLIM 1200 36 W 4000 K

LED VALUE DAMP PROOF SLIM | Damp-proof luminaire with slim housing



Areas of application

- Car parks
- Pathway lighting
- Workshops, assembly lines

Product benefits

- Easy connection thanks to push terminal
- Very slim design
- Lightweight design
- Energy savings of up to 50 % compared to conventional luminaires

Product features

- 3 different lengths available
- Seamless high-quality housing made of fully anodised aluminum
- Cover made of UV-stable polycarbonate
- LED alternative to conventional luminaires
- High system efficiency: up to 110 lm/W
- Color rendering index R_a : > 80
- Initial color consistency: < 5 SDCM
- Type of protection: IP65
- Impact resistance: IK08



- Lifetime: up to 30,000 h
- CCC marked, CB test certificate

TECHNICAL DATA

Electrical data

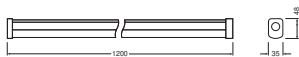
Nominal wattage	36.00 W
Nominal voltage	220...240 V
Mains frequency	50...60 Hz
Nominal current	156.000 mA
Power factor λ	> 0.95
Total harmonic distortion	< 20 %
Protection class	III

Photometrical data

Luminous flux	4000 lm
Luminous efficacy	111 lm/W
Color temperature	4000 K
Light color (designation)	Cool White
Color rendering index Ra	80
Standard deviation of color matching	< 5 sdcm
Beam angle	140 ° x 103 °

Dimensions & Weight

Length	1230.00 mm
Width	36.00 mm
Height	48.00 mm
Product weight	455.00 g



DAMPPROOF SLIM 1.2m

Materials & Colors

Product color	White
Housing color	White
Body material	Plastic

Cover material	Polycarbonate (PC)
Mercury content	0.0 mg

Application & Mounting


Ambient temperature range	-20...+40 °C
Temperature range at storage	-20...+70 °C
Type of connection	Terminal
Type of protection	IP65
Protection class IK (shock resistance)	IK08
Dimmable	No
Mounting type	Surface
Mounting location	Ceiling / Wall
LED module replaceable	Not replaceable

Lifespan

Lifespan L70/B50 at 25 °C	30000 h ¹⁾
Number of switching cycles	30000

¹⁾ t[h]: L70 / B50 @ 25 °C (Ta), t[h]: L80 / B10 @ 25 °C (Ta), t[h]: L90 / B10 @ 25 °C (Ta)

DOWNLOAD DATA

Photometric and lighting design files	Document name
 IES file (IES)	DAMPPROOF SLIM 12 36W/4000K

LOGISTICAL DATA

Product code	Packaging unit (Pieces/Unit)	Dimensions (length x width x height)	Gross weight	Volume
4058075238725	Folding box 1	50 mm x 40 mm x 150 mm	884.00 g	0.30 dm ³
4058075238732	Shipping box 20	235 mm x 235 mm x 1,298 mm	18821.00 g	71.68 dm ³

The mentioned product code describes the smallest quantity unit which can be ordered. One shipping unit can contain one or more single products. When placing an order, for the quantity please enter single or multiples of a shipping unit.

DISCLAIMER

Subject to change without notice. Errors and omission excepted. Always make sure to use the most recent release.

